

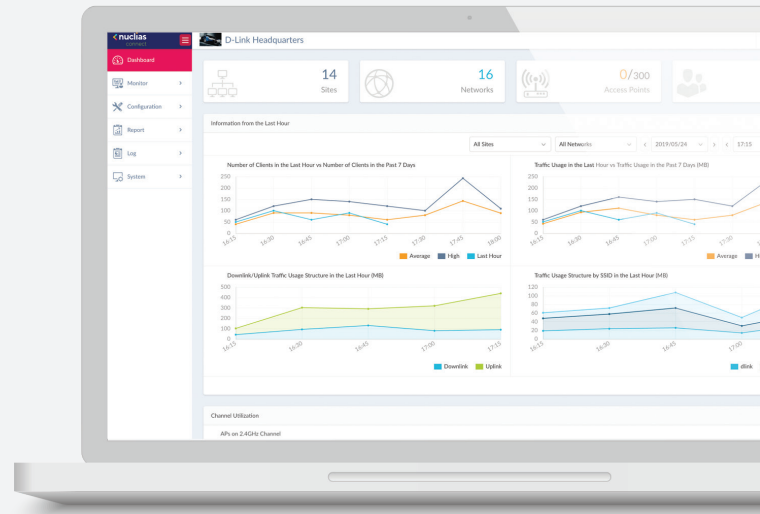
NUCLIAS CONNECT HUB

DNH-100



Nuclias Connect Overview

Welcome to Nuclias Connect, D-Link’s centralized management solution for Small-to-Medium-Sized Business (SMB) networks. Nuclias Connect makes it easier to analyze, automate, configure, optimize, scale, and secure your network – delivering the convenience of an Enterprise-wide management solution, at an SMB price.



▲ Intuitive Dashboard Interface

Solution Features

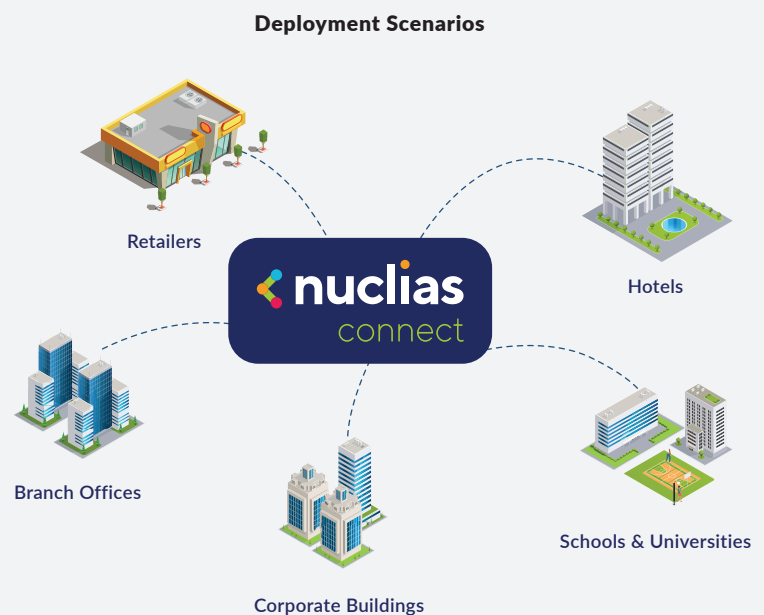
- » Free-to-Download Nuclias Connect Management Software
- » License-Free Access Points and Switches
- » Backwards-Compatibility
- » Intuitive Interface
- » Inexpensive Hardware Controller*
- » Traffic Reporting and Analytics
- » Remote Configuration and Batch Configuration.
- » Online Firmware Upgrade (APs/Switches)
- » Multi-Tenant and Role-Based Administration
- » Searchable and Auditable Event and Change Logs
- » 802.1x and RADIUS Server, POP3, LDAP, Social Login (FB/Google), Click Through
- » Multilingual Support
- » Front-Desk Ticket Management
- » Authentication and Payment Gateway (Paypal) Integration via Customizable Captive Portal

Solution Benefits

1 / Network-Wide Management

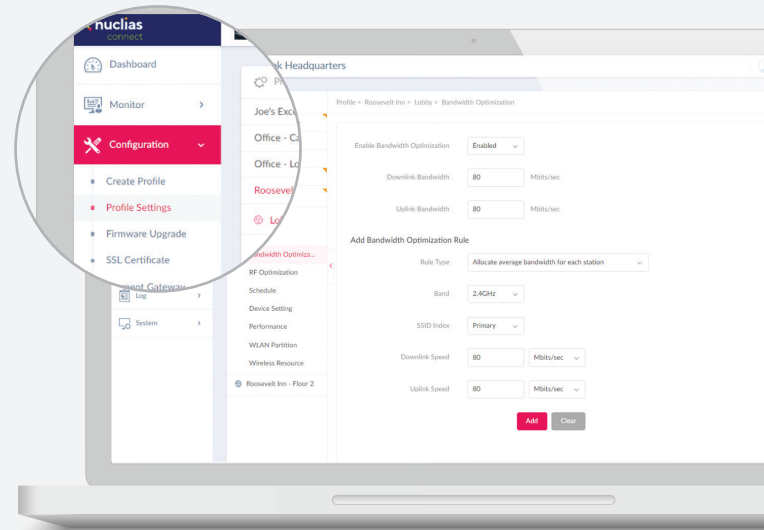
Free to download on Windows server (or Linux via Docker), the Nuclias Connect software currently supports numerous new/legacy D-Link Access Point (AP) and switch models and is capable of managing up to one thousand APs/switches without the need for additional licensing charges. Coupled with a local lite management Smartphone app and an inexpensive optional hardware controller (The Hub*), Nuclias Connect is even suitable for remote locations where a dedicated PC or server might not be practical.

*Please contact your local D-Link office for availability



2 / Flexibility to Meet Your Needs

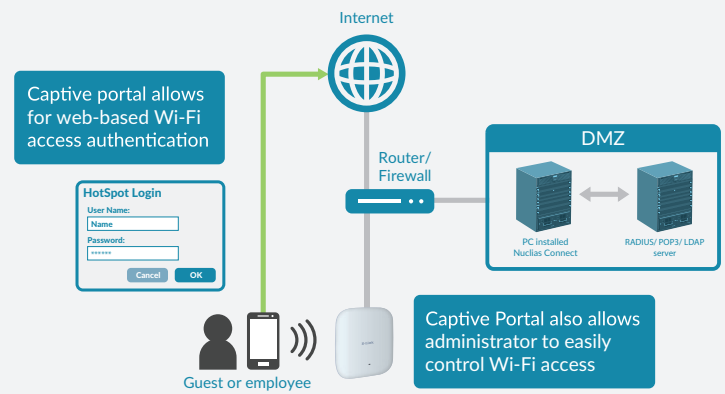
Through software-based monitoring and remote management of all wireless Access Points (APs) and switches on your network, Nuclias Connect offers tremendous flexibility compared to traditional hardware-based management systems. Configuration can be done remotely and management software is customizable. Nuclias Connect enables control and analytics of a broad or fine granularity, presentable in a variety of formats. Additionally, admins can provide and manage a variety of distributed deployments, including the option to configure settings and customize admin accounts in a specific manner for each deployment. Nuclias Connect gives you the financial and technical flexibility to expand from a small network to a large one (up to a total of 1,000 APs and/or switches), while retaining a robust and centralized management system.



▲ Network-Wide Configuration

3 / Easy Administration

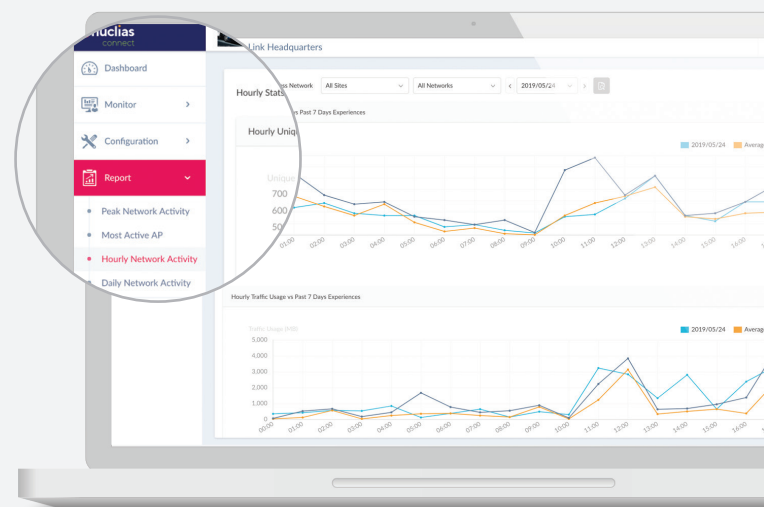
Nuclias Connect supports multi-tenancy, so network admins can grant localized management authority for local networks. Nuclias Connect can also manage network switches. In addition, because APs can support eight SSIDs per radio, administrators have the option of using one SSID to create a guest network for visitors. Nuclias Connect allows for multiple user authentications and also makes it possible to configure specific access controls for each SSID, giving admins the option of configuring separate internal networks for different subnets. This means that more advanced Value-Added Services, such as Captive Portal or Wi-Fi Hotspot, can be used to help manage wireless network traffic.



▲ Captive Portal with Customizable Login Page

4 / Insights at a Glance

Gain an extensive understanding of your network through usage analytics and status reports which can be viewed easily at a glance. Insights derived from traffic data can create business value. Traffic can be viewed across the entire network or to the level of a single AP or switch.



▲ Statistics - Hourly Network Activity

5 / Network Security and Data Privacy

Nuclias Connect balances the need for access convenience with the need for security. All communications over the system are encrypted (WPA2/WPA3), with your user data never leaving your possession. Additional security measures (such as firewalls) can also be added to your network, with no unneeded technical difficulty.

Product Introduction

The DNH-100 Nuclias Connect Hub is a hardware controller with pre-loaded Nuclias Connect software. It is designed to support small-to-medium business or enterprise environments by providing network administrators the capability to manage D-Link Nuclias Connect access points and switches through one single device. The Nuclias Connect Hub can currently manage up to one hundred devices (APs/switches) per unit with the potential to extend to other Nuclias Connect products in future firmware updates.

Efficient Administration

- » Local and multi-site access point and switch management
- » Reports system in place to administer and monitor wired and wireless networks
- » Single sign-on (SSO) portal supported to manage multiple controllers in one place
- » Accessible through downloadable app or standard web browser

Agile Scalability

- » Discover, manage, configure, and monitor up to 100 devices per controller
- » Cost-effective; no extra server needed for AP/switch management
- » Simply add more controllers when you want to scale up your network

Controller with Nuclias Connect

- » Powerful management, monitoring, and troubleshooting functionalities with Nuclias Connect
- » Flexible access through web (HTTPS), SSH, and Telnet
- » Direct connection with APs and switches; no need for proxy device

Versatile Installation

- » Rack-mountable
- » Small form-factor for easy placement
- » Integrated hardware controller and self-contained application server in one device

Supported Devices

» APs

DAP-2610
 DAP-2622*
 DAP-2662*
 DAP-2680*
 DAP-2682*
 DAP-3666*
 DAP-X2810
 DAP-X2850
 DIS-2650AP*
 DIS-3650AP

* These models currently do not support all available features of the DNH-100. All available features for these models may become available in future firmware versions.

» Switches

DGS-1210-08P (HW version Gx)	DGS-1210-26 (HW version Fx)
DGS-1210-10 (HW version Fx)	DGS-1210-28 (HW version Fx)
DGS-1210-10P (HW version Fx)	DGS-1210-28P (HW version Fx)
DGS-1210-10MP (HW version Fx)	DGS-1210-28MP (HW version Fx)
DGS-1210-16 (HW version Gx)	DGS-1210-48 (HW version Gx)
DGS-1210-20 (HW version Fx)	DGS-1210-52 (HW version Fx)
DGS-1210-24 (HW version Gx)	DGS-1210-52MP (HW version Fx)
DGS-1210-24P (HW version Gx)	

Technical Specifications

General		
Device Interfaces	1 x Gigabit LAN 1 x USB 3.0 (offers 5V / 1A power)	1 x MicroSD Slot 1 x RJ45 Console
Standards	IEEE 802.3u/ab	IEEE 802.3x Flow Control
Functionality		
Network Management	D-Link Nuclias Connect Telnet	Web (HTTPS) Secure Telnet (SSH)
LEDs	Power/status	LAN
Physical		
Dimensions	190 x 100 x 31 mm (7.48 x 3.94 x 1.22 in)	
Weight	529 g (1.16 lbs) without microSD card	
Power Supply	Internal power supply	
Maximum Power Consumption	6.5 W	
Temperature	Operating: 0 to 40 °C (32 to 104 °F)	Storage: -20 to 65 °C (-4 to 149 °F)
Humidity	Operating: 10% to 90% non-condensing	Storage: 5% to 95% non-condensing
Meantime Between Failure (MTBF)	> 30,000 hours	
Certifications	FCC CE	UL BSMI
Order Information		
Part Number	Description	
DNH-100	Nuclias Connect Hub	

Updated 09/28/2022

Specifications are subject to change without notice. D-Link is a registered trademark of D-Link Corporation and its overseas subsidiaries. All other trademarks belong to their respective owners. ©2022 D-Link Corporation. All rights reserved. E&OE